



STANDARD DETAILS

CITY OF SHERWOOD  
ARKANSAS

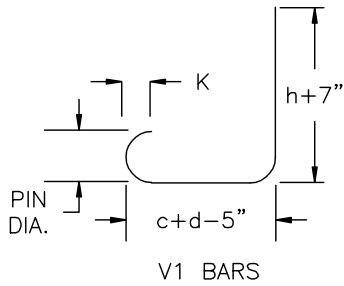
TITLE

RETAINING WALL DETAILS  
(6' MAXIMUM HEIGHT)

STD-54

Issue Date  
January, 2007

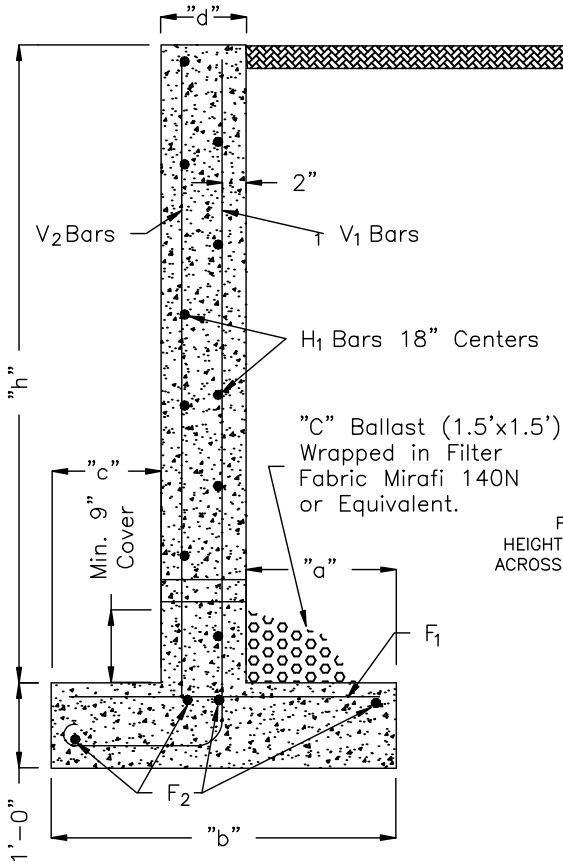
Revision Date



NOTE: IF WALL HEIGHT EXCEEDS 8' OR IF RETAINED EARTH SLOPES UP EXCEEDING 10% GRADE, THE WALL SHALL BE DESIGNED BY PROFESSIONAL ENGINEER WITH GEOTECHNICAL STUDY.

BENDING DIAGRAM

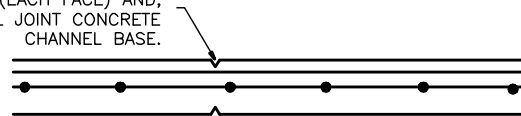
BAR SIZE	BAR	PIN DIA.
#4	4 1/2"	2 1/2"
#5	5"	3"



STEEL SCHEDULE

"h"	"c"	"d"	"a"	"b"	V1 bars		F1 bars		H1	V2	F2
					Size	Spacing	Size	Spacing	#4 bars	#4 bars	#4 bars
1'-0"	8"	8"	8"	2'-0"	#4	12"	#4	18"	18"	18"	5
2'-0"	8"	8"	8"	2'-0"	#4	12"	#4	18"	18"	18"	5
3'-0"	8"	8"	8"	2'-0"	#4	12"	#4	18"	18"	18"	5
4'-0"	8"	8"	1'-2"	2'-6"	#4	12"	#4	12"	18"	18"	5
5'-0"	8"	8"	1'-8"	3'-0"	#4	9"	#4	9"	18"	18"	5
6'-0"	8"	8"	2'-2"	3'-6"	#4	6"	#4	6"	18"	18"	6
7'-0"	12"	8"	2'-4"	4'-0"	#4	6"	#4	6"	18"	18"	6
8'-0"	12"	8"	2'-10"	4'-6"	#4	6"	#4	6"	18"	18"	6

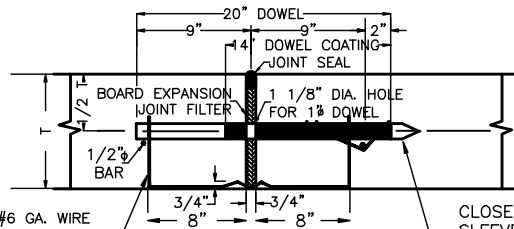
PROVIDE 3/4" CHAMFER FULL HEIGHT OF WALL (EACH FACE) AND, ACROSS TOP. TOOL JOINT CONCRETE CHANNEL BASE.



CONTROL JOINT

USED AT 10' O.C. EACH SIDE (TO ALIGN WITH FENCE POSTS)

PROVIDE KEYWAY AT BASE OF WALL. KEYWAY NOT REQUIRED ON WALLS LESS THAN 4'.



DOWEL BAR CONSISTING OF MIN. #6 GA. WIRE CHAIR & DOWEL WOLDER AT EACH DOWEL & TWO 1/2" STEEL BARS AT EACH CHAIR. 3/4" EXPANSION JOINT AT 80' O.C.

EXPANSION JOINT

(DOWEL BARS TO BE 12" ON CENTER)

CLOSED END DOWEL BAR SLEEVE TO FIT DOWEL AND BE SECURED BY BAR TIE OR WELDING.

REINFORCED CONCRETE RETAINING WALL

2" WEEP HOLES (MAX. SPACING 10'-0" CTRS.) TO BE PLACED TO ALIGN WITH CONTROL JOINTS. ALL EXPOSED EDGES TO BE CHAMFERED 3/4".